

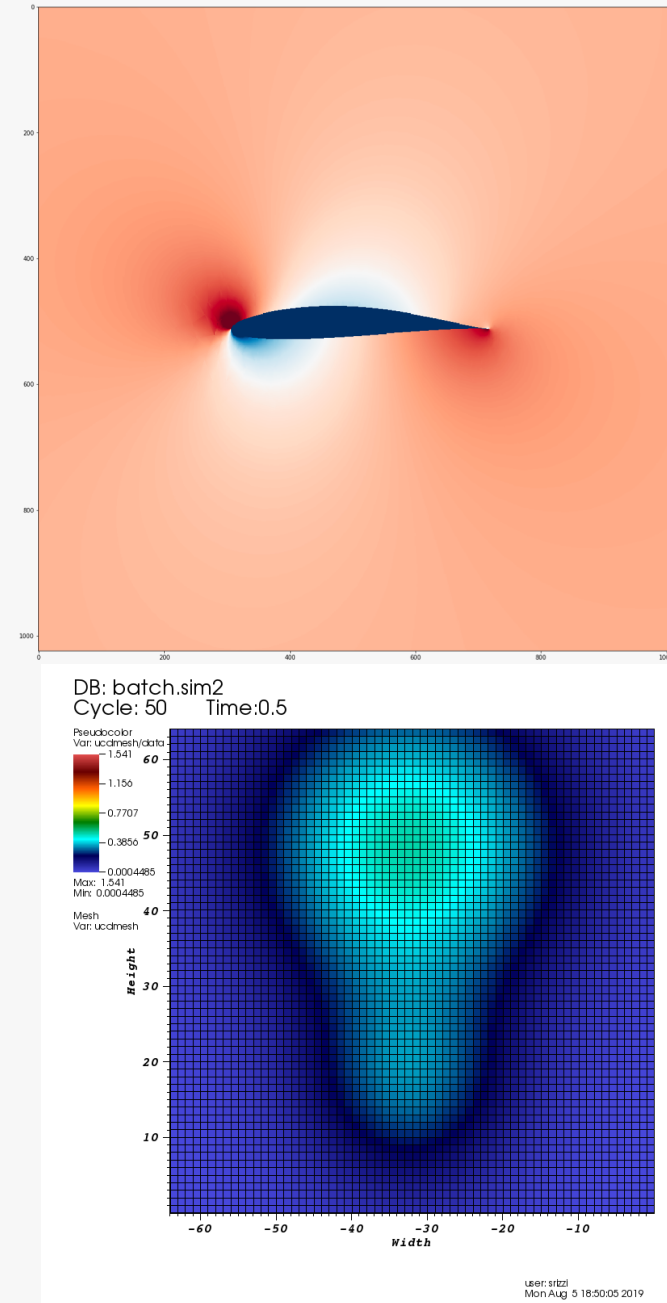
Exploring Visualization with Jupyter Notebooks

Joseph Insley
Lead, Visualization & Data Analytics
Argonne Leadership Computing Facility

Silvio Rizzi
Assistant Computer Scientist
Argonne Leadership Computing Facility

Two use cases

1. Simple visualization of a simulation of 2D potential flow around an airfoil.
2. In Situ visualization with SENSEI and VisIt LibSim backend



Getting started

1. Copy the notebooks to your home directory

```
cp -r /projects/ATPESC2019/visualization/ATPESC2019-jupyter/ ~
```

1. Start a Jupyter session

1. Point your browser to <https://jupyter.alcf.anl.gov>
2. Select Cooley
3. Enter username and password (pin+cryptokey)
4. From Jupyter navigate to `ATPESC2019-jupyter/` in your home directory
5. Launch the notebooks